

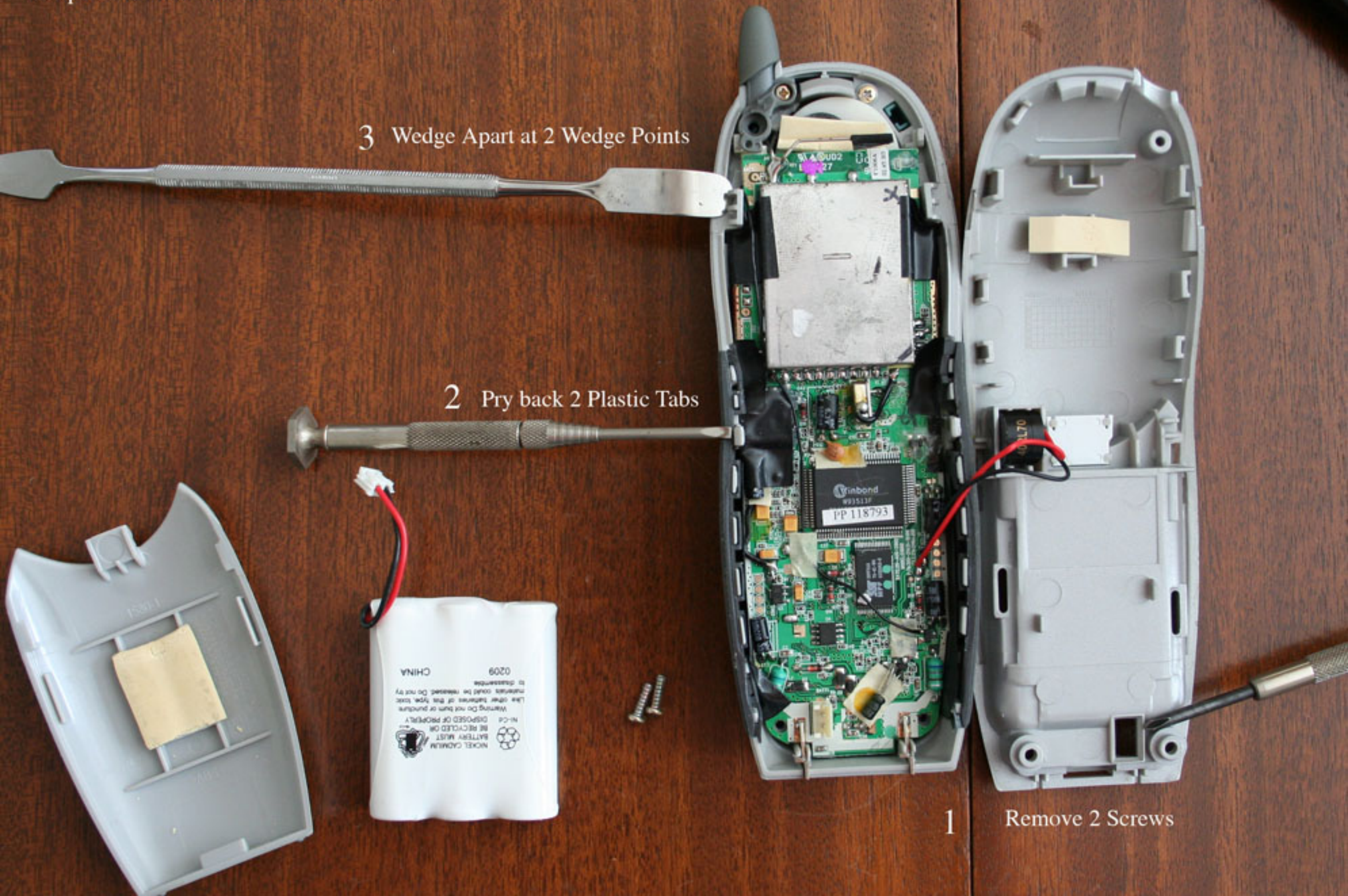
To open GE Phone Model 21006GE3-A

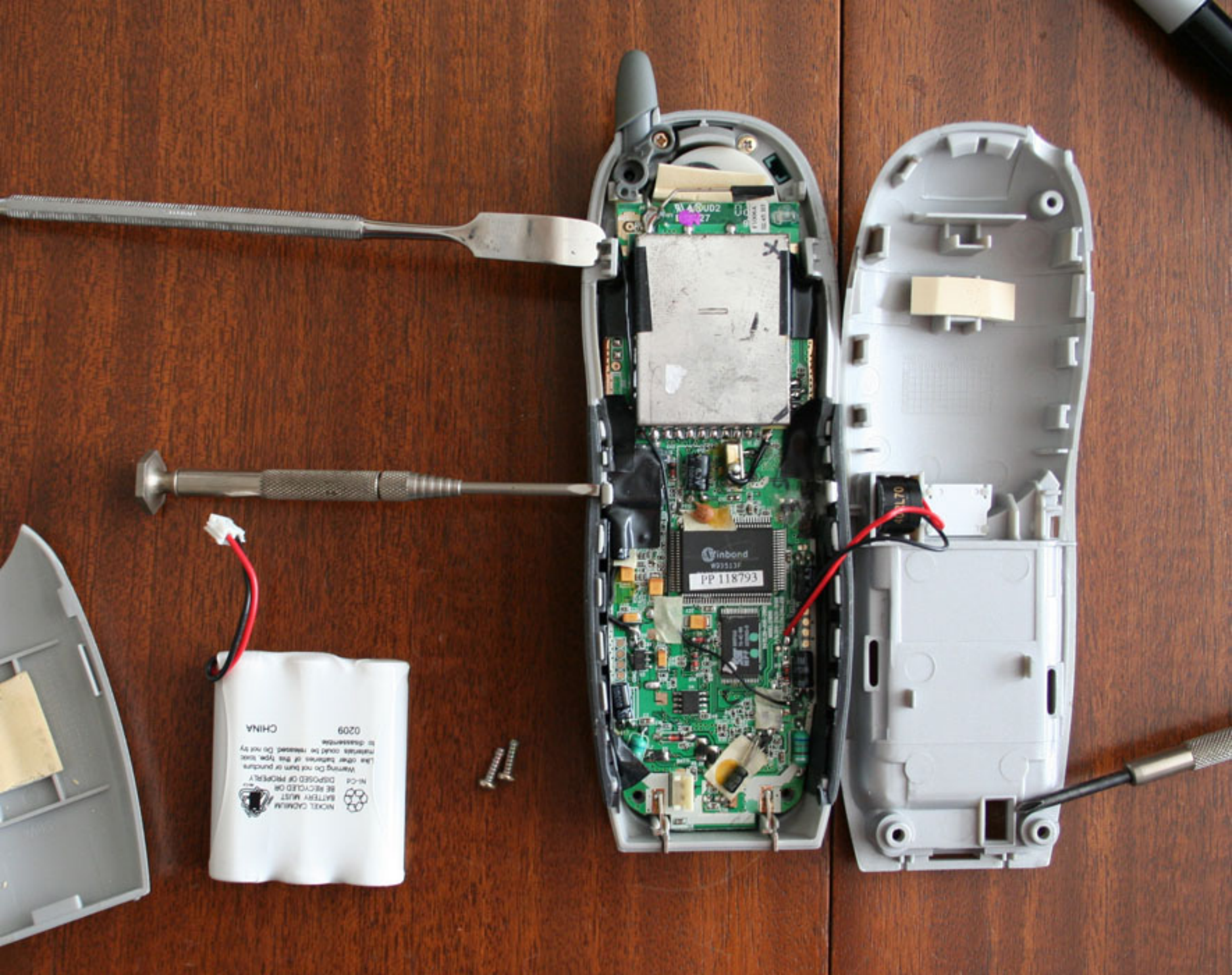
4 - Lift apart from bottom, top will eventually pop apart.

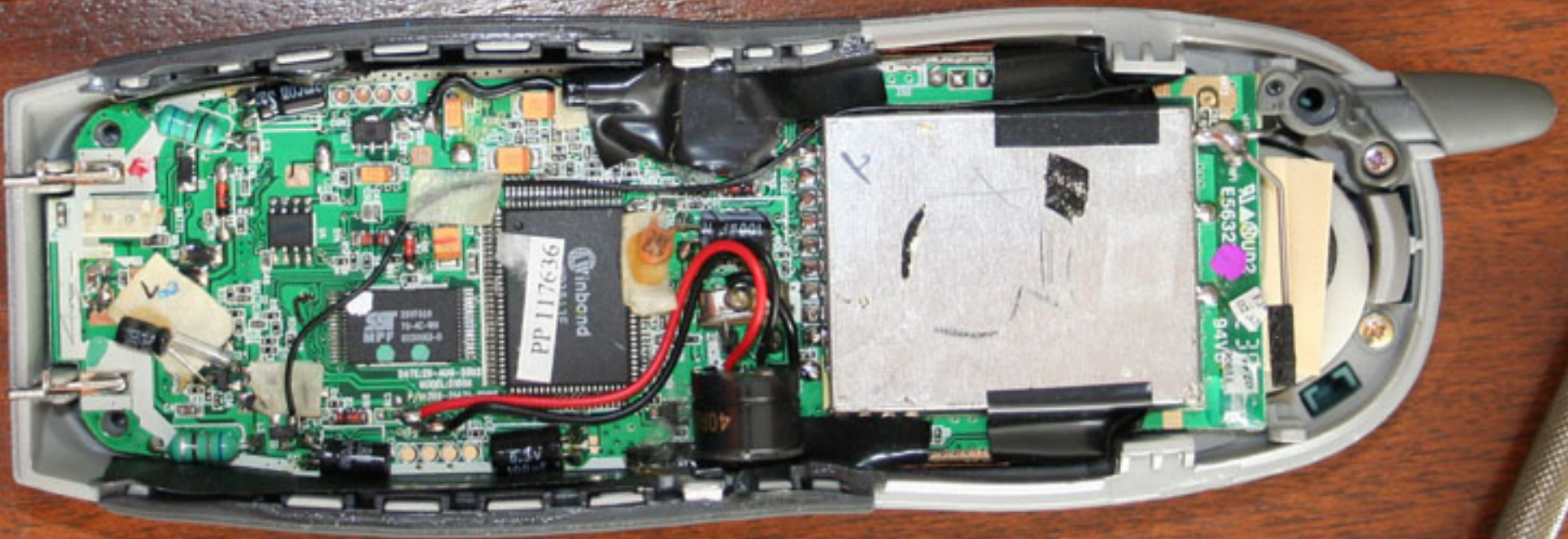
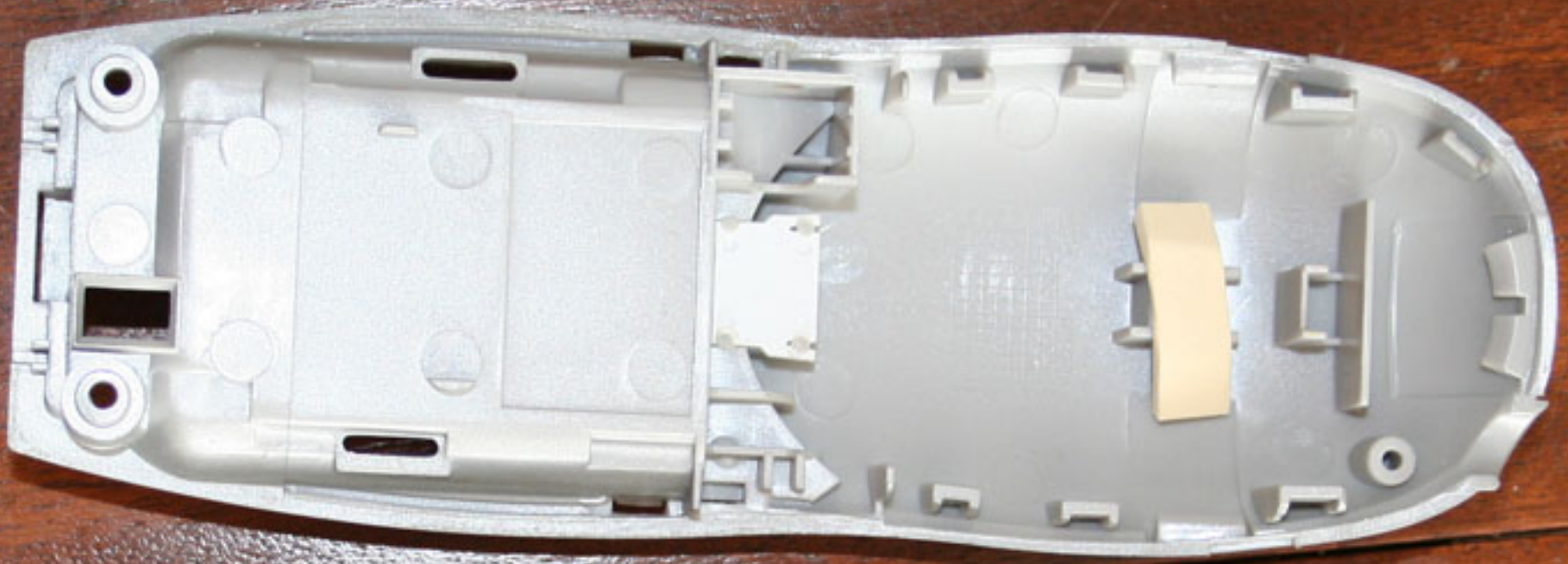
3 Wedge Apart at 2 Wedge Points

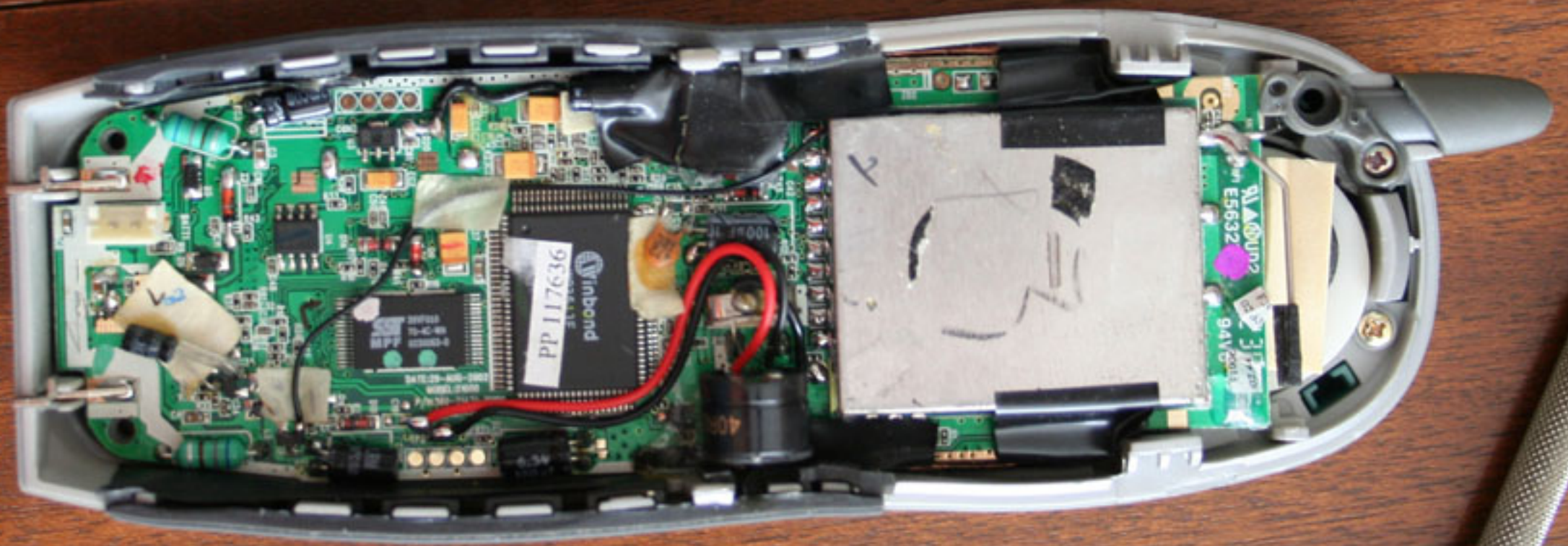
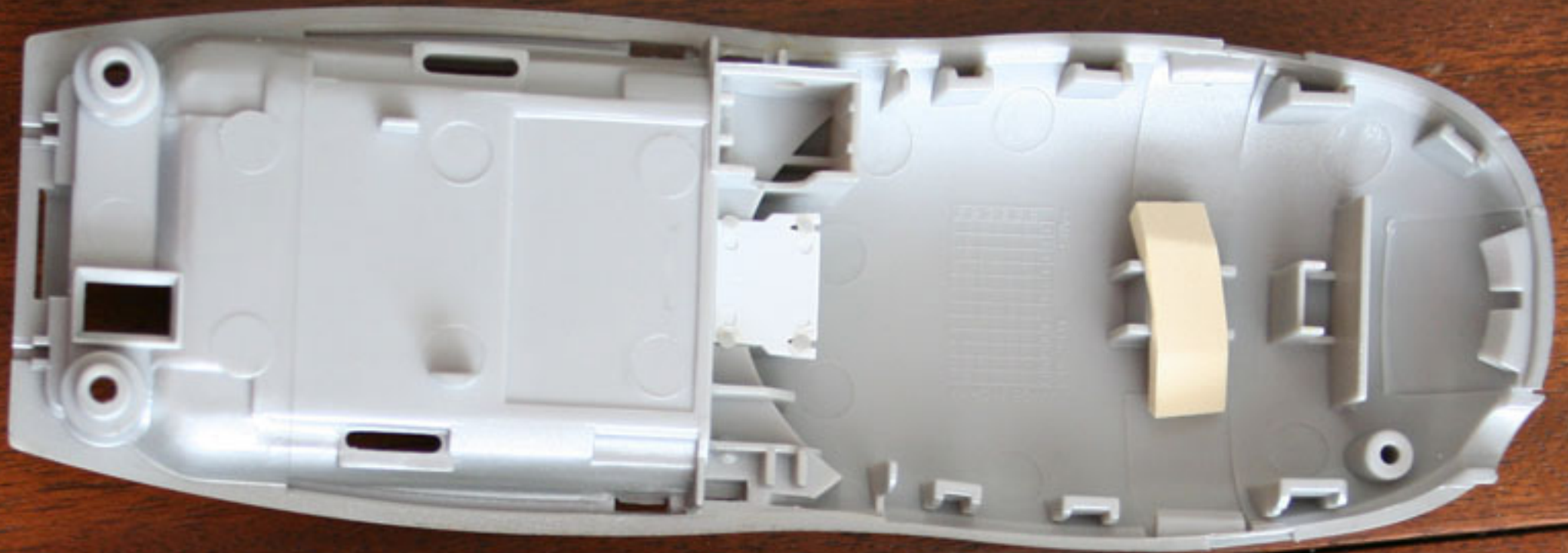
2 Pry back 2 Plastic Tabs

1 Remove 2 Screws

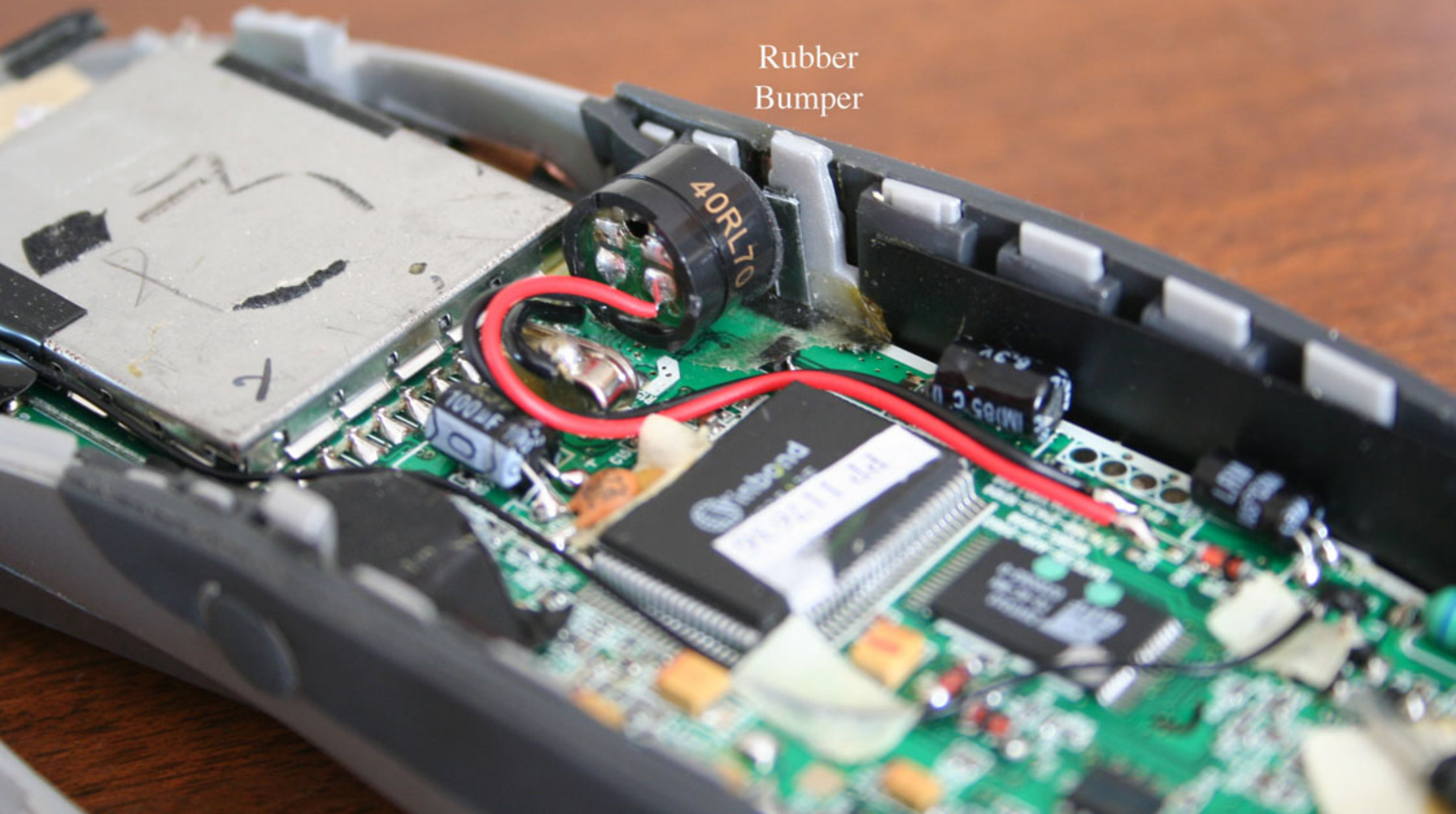








Rubber
Bumper



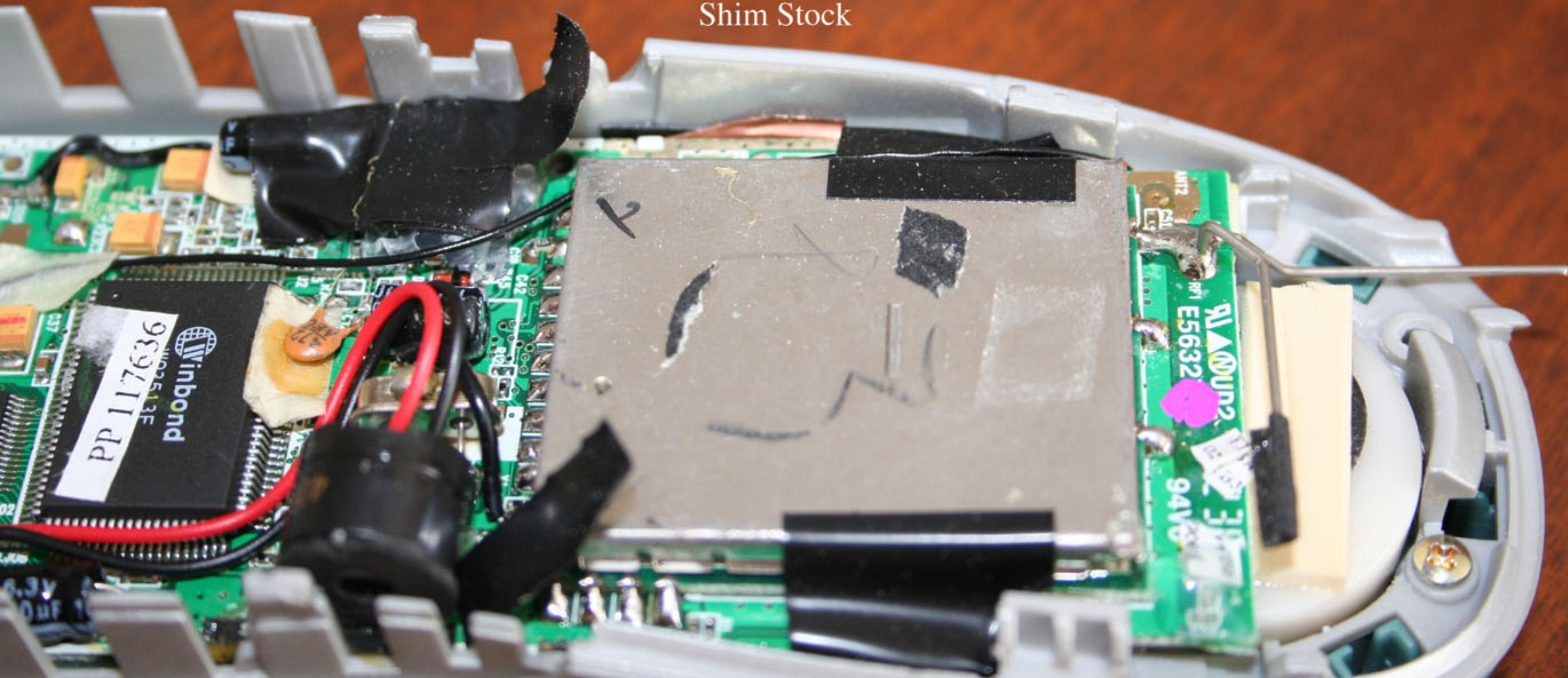
Rubber Bumper







Copper
Shim Stock





Rubber Panel
w/o Inner Lining



Small
Bumper



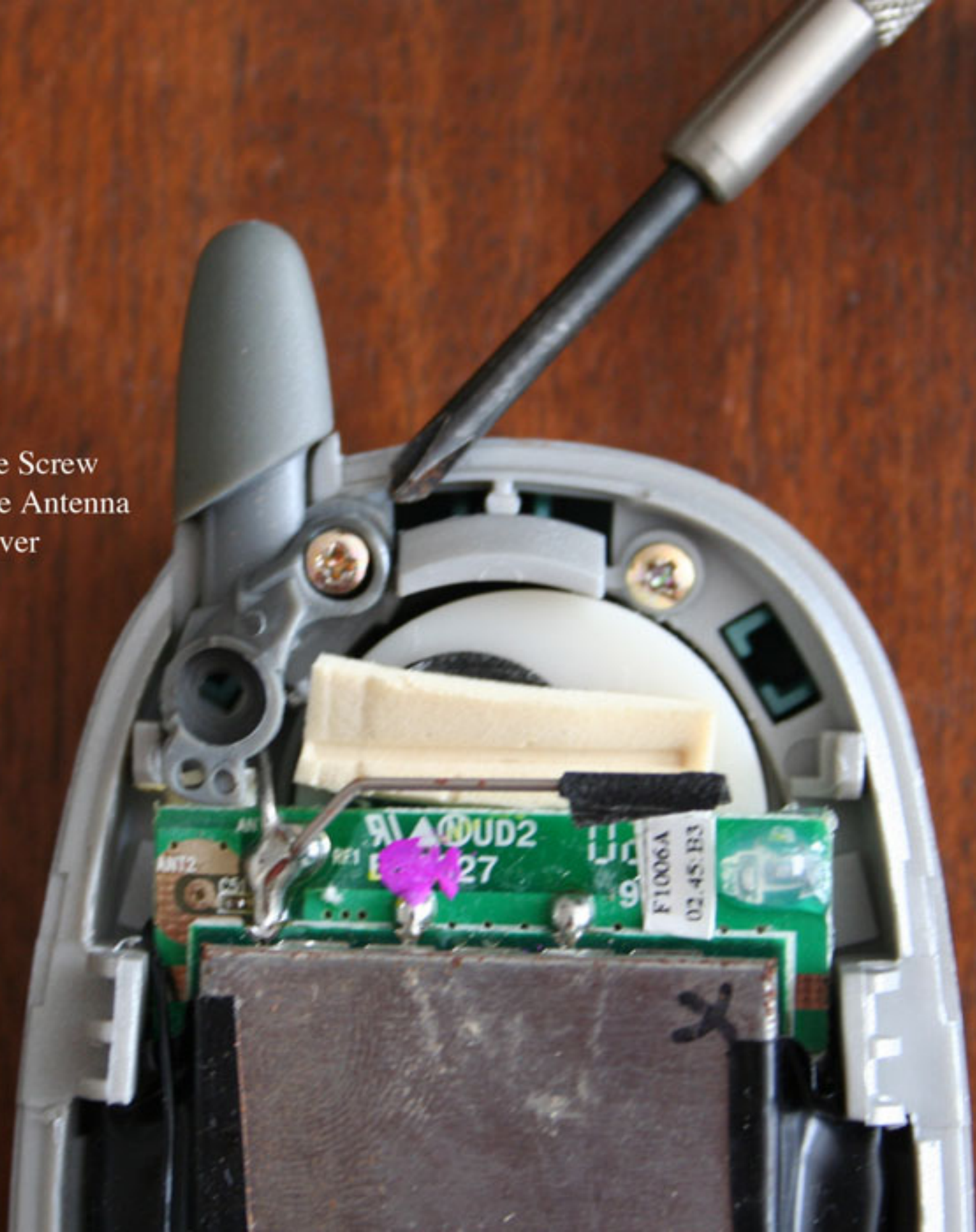
Ringer
Speaker

Rubber Panel
w/ Inner Lining

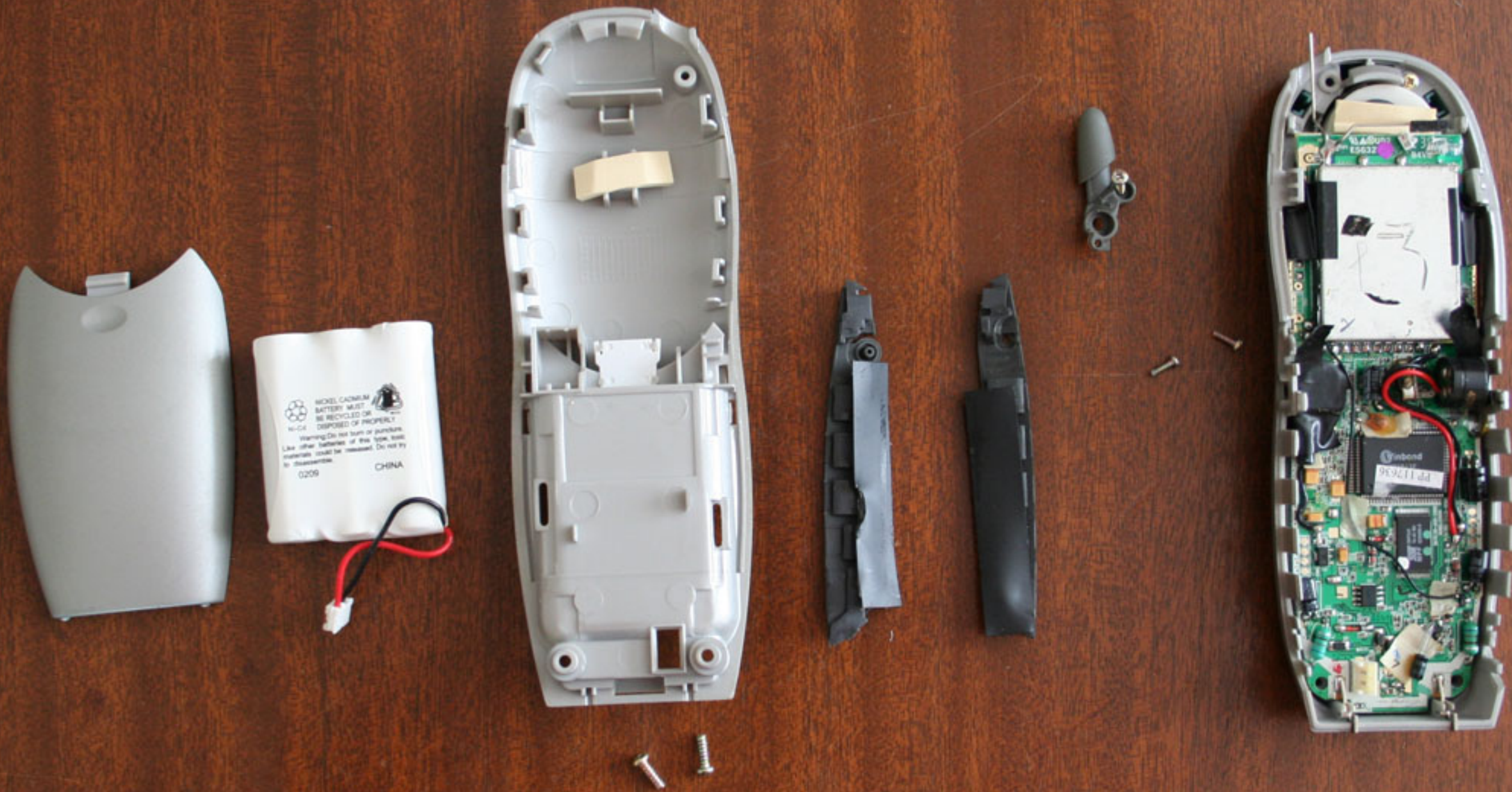


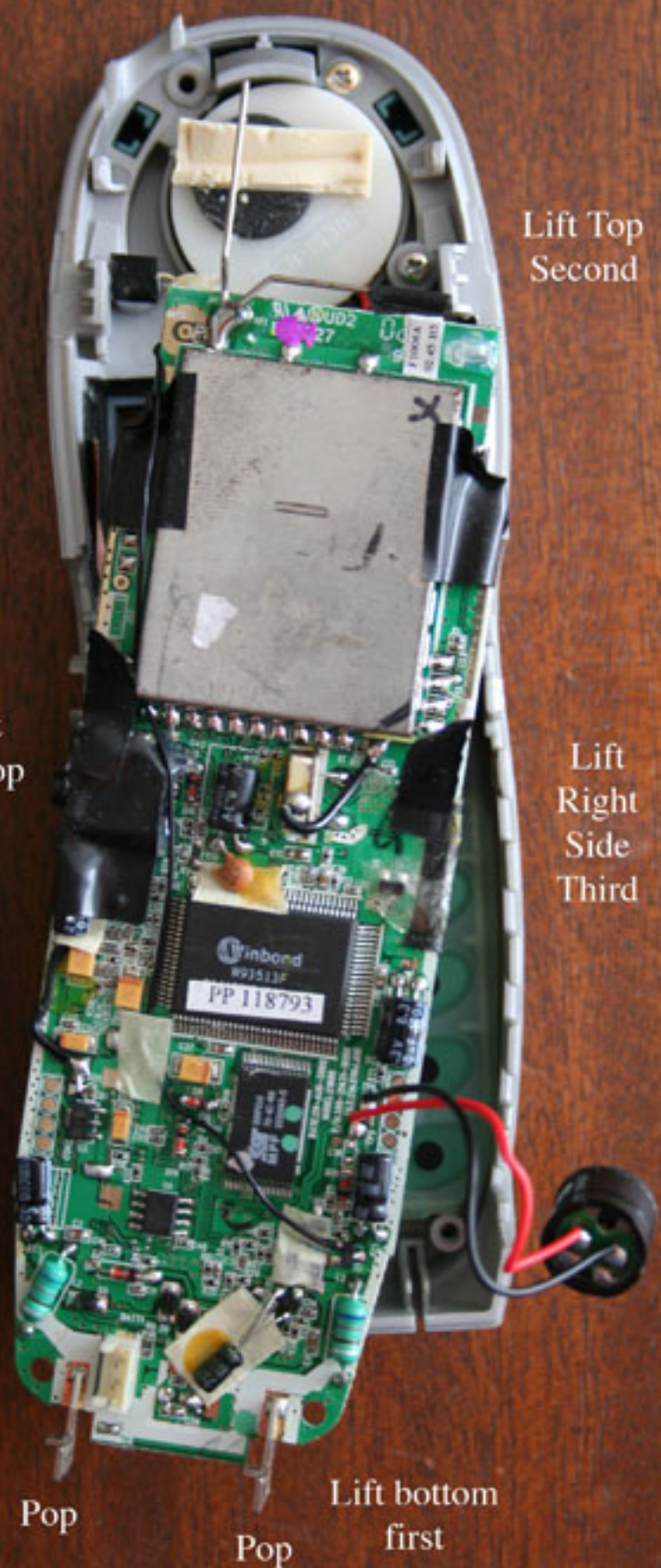
Peel Back
Tape to Reveal
2 Screws

Remove Screw
to Remove Antenna
Cover



Order of Disassembly





Lift Top
Second

Pivot &
Last Pop

Lift
Right
Side
Third

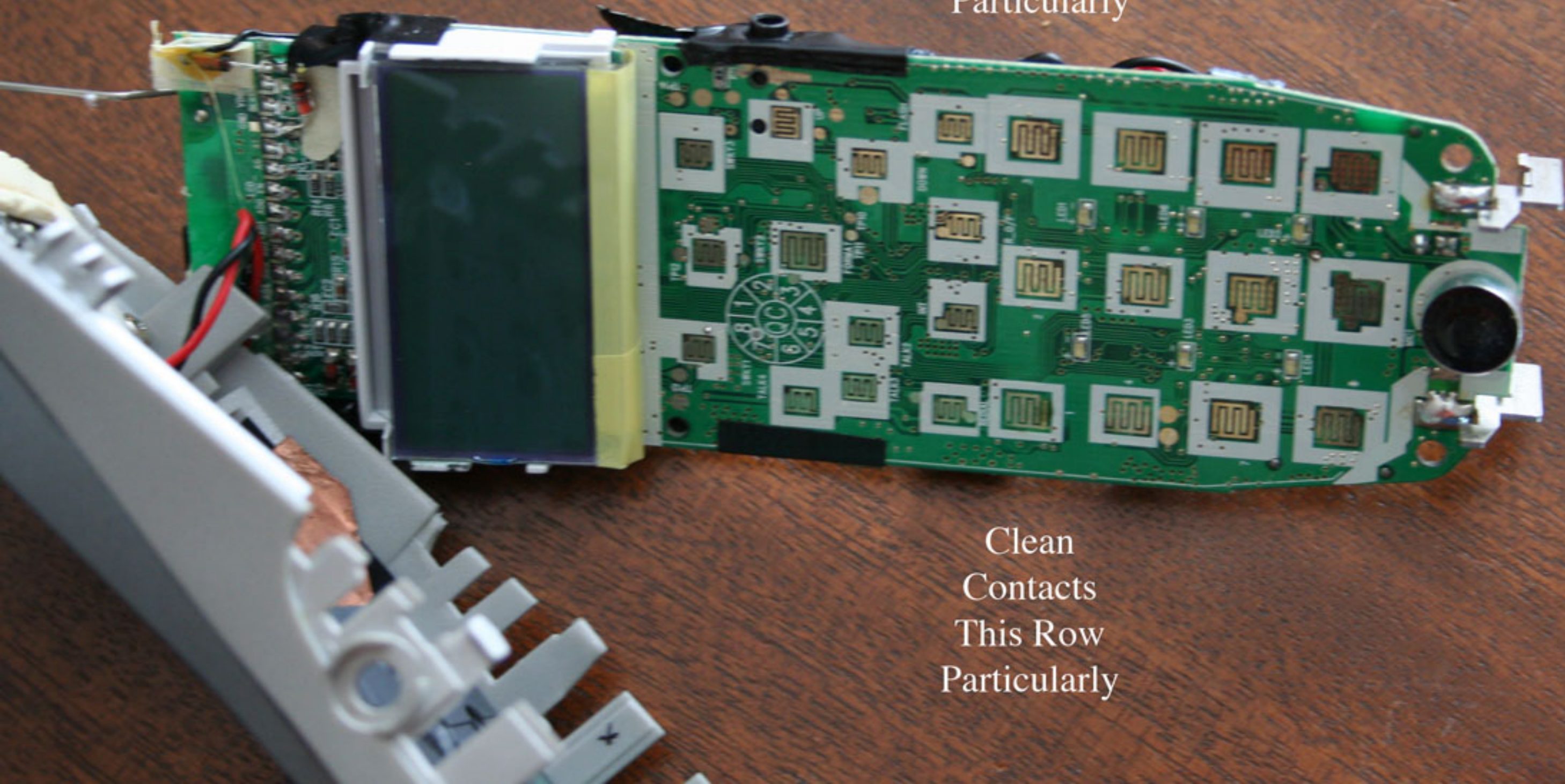
Lift bottom
first

Pop

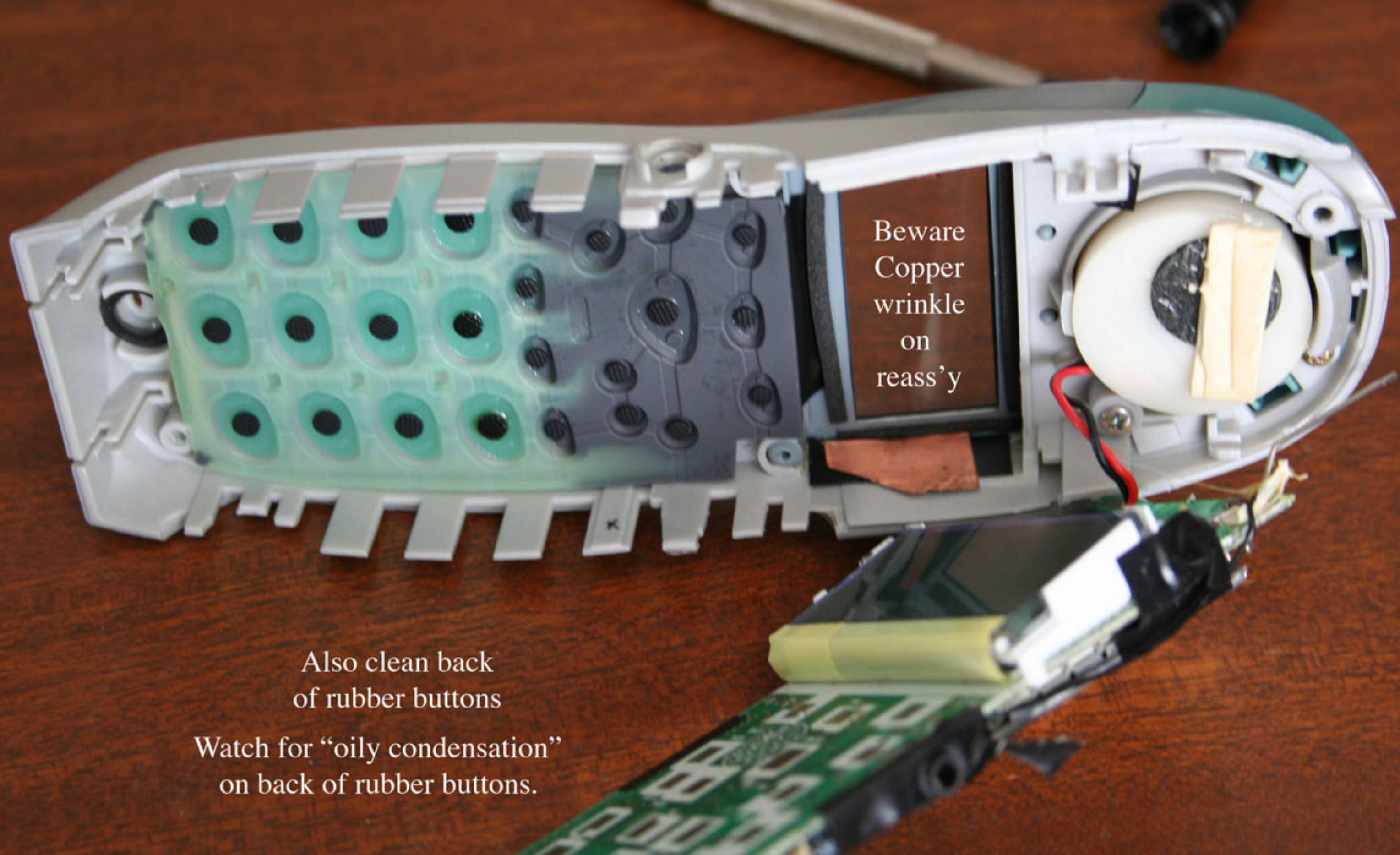
Pop

Beware Wrinkle
Copper on Reass'y

Clean
Contacts
This Row
Particularly



Clean
Contacts
This Row
Particularly



Beware
Copper
wrinkle
on
reass'y

Also clean back
of rubber buttons

Watch for "oily condensation"
on back of rubber buttons.



format

^

v

REDIAL

PAGE

RINGER

FLASH

1

4 ghi

2 abc

3 def

4 ghi

5 jkl

6 mno

7 pqrs

8 tuv

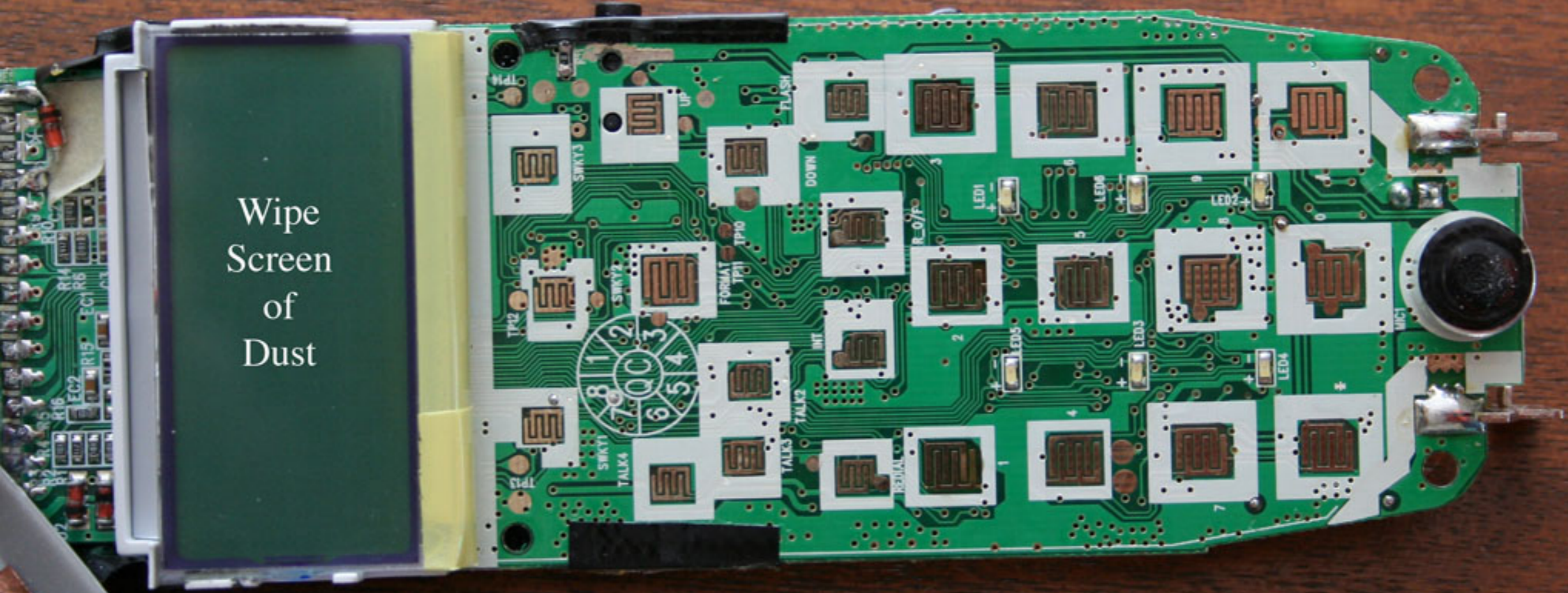
9 wxyz

* tone


0 oper

pause

Wipe
Screen
of
Dust



Reassembly

Press "toward bottom" 
on circuit board
same time as
step 3

4 Watch Copper
for Wrinkle



1,2
Align
Contacts

4 Watch Copper
for Wrinkle

3
Pop
In
Plug

Snap phone together starting at top and working way to bottom.